

Context Assessment

Guide, Tools and Online Platform

Alyssa Klein, MS Lidan Du, PhD

June 11, 2015



Background

Many Feed the Future projects did not undertake adequate analysis of the factors that may contribute to food insecurity and malnutrition in communities and households of their Zone of Influence..



<https://www.spring-nutrition.org/publications/reports/leveraging-agriculture-nutritional-impact-through-feed-future>



This Guide

- **Task:** Develop guidance for selection, use and adaptation of existing context assessment tools to be used by activity designers and implementers of integrated agriculture-nutrition programming
- **Objective:** To facilitate program designers and implementers of Feed the Future projects to plan context assessment and select the most appropriate tools to strengthen the linkages between agriculture and nutrition.



What is Context Assessment?

- Context assessment is defined as an exercise in information gathering and analysis intended to improve understanding of a geographic target area and/or field of inquiry within a specific timeframe.



SPRING. 2014. Linking Agriculture and Nutrition: A Guide to Context Assessment Tools. Arlington, VA: USAID Strengthening Partnerships, Results, and Innovations in Nutrition Globally (SPRING) Project.



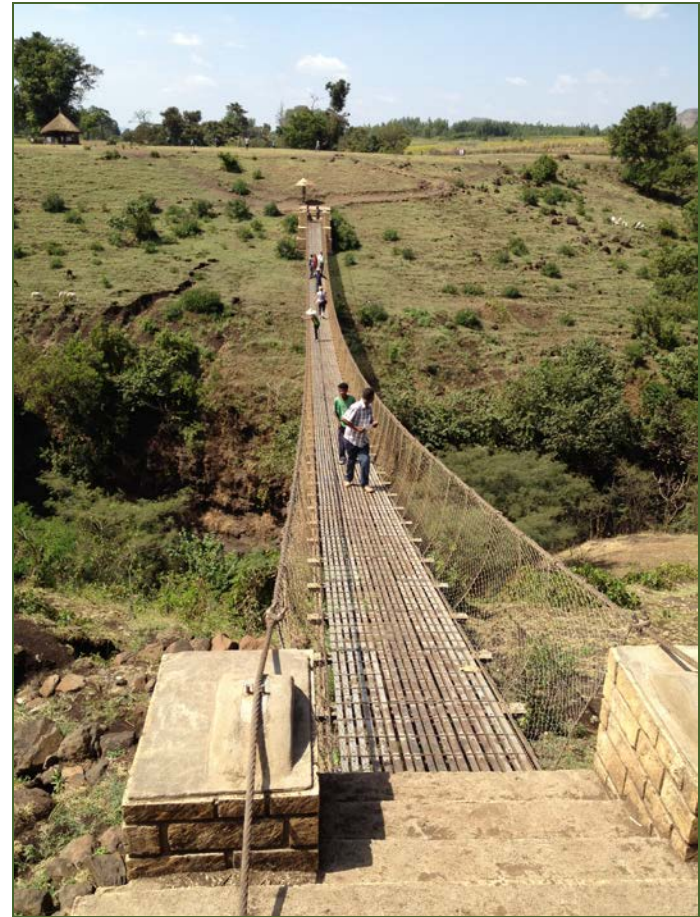
Why Is Context Assessment Important?

- To fill information gaps and check assumptions to make the design of interventions and assistance be more tailored to the contextually-specific situations



What Can Context Assessment do?

- Identify problems
- Understand determinants of these problems
- Identify vulnerable populations
- Identify opportunities to address problems
- Build on existing programs & facilitate cooperation
- Assess potential harm



When Should We Use Context Assessment?

- Project design
 - Project appraisal documents
 - Request for applications
 - Proposals
- Project modification
- Intervention modification
- Exit strategy planning
- Strategy design or revision



Who Should Do Context Assessment?

- Wide variation in scope, technical complexity, timing, and required resources
- Can require significant previous experience and expertise
- Key questions are very focused on one sector
- Secondary data analysis and limited primary data collection



What This Guide Is and Is Not

This Guide Is:

- Guidance for integrated agriculture-nutrition project design
- Explanation of basic steps
- Summaries of existing tools with guidance for selection

This Guide Is Not:

- A stand-alone context assessment tool
- Guidance for strategy design
- A “how-to” guide to secondary data analysis
- Description of nutrition causal analysis
- Project design guidance



What Is In This Guide?

Part 1: General Steps For Context Assessment

- Formulate questions
- Define the context:
 - Define geographic or administrative level of focus
 - Determine level of data required
- Identify existing data
- Original data collection and analysis



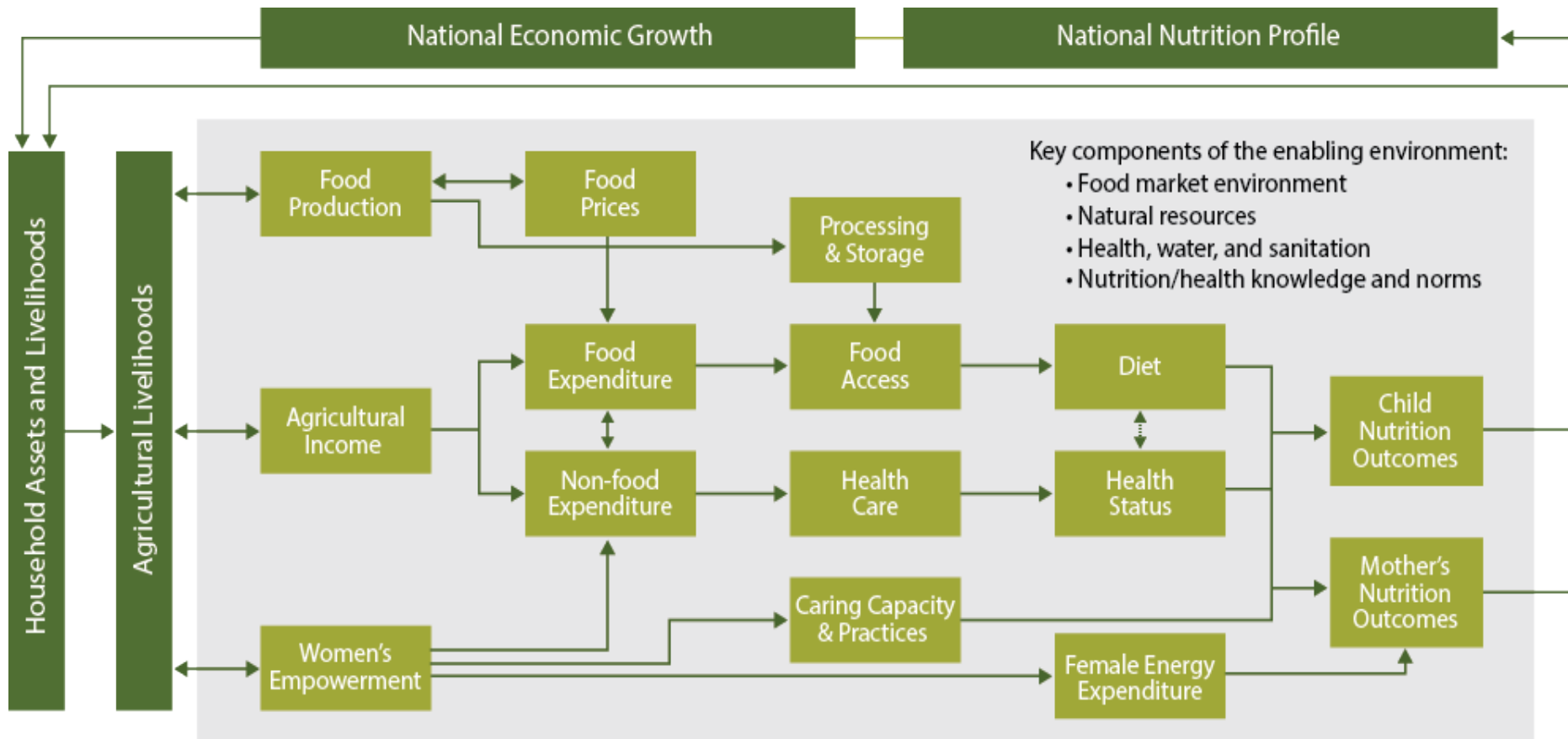
What Is In This Guide?

Part 2: Interactive Online Tool Library

- Guidance questions for tool selection
- Summaries of each tool – companion document
- Links to tools included in library
- Agriculture to Nutrition Pathways Framework



Agriculture - Nutrition Pathways



Tool Inclusion Criteria

- Linked to assessment or program design
- Fits within the agriculture-nutrition pathway framework
- Not oriented exclusively to policy or strategy development
- Is not primarily for measuring anthropometry
- Indicators are not included in large scale/national surveys
- Relevant to food insecure country context.
 - Related to project design for agriculture-nutrition linkages.



Steps for Using Interactive Online Tool

1. Click on the component of interest from the "Conceptual Pathways between Agriculture and Nutrition" diagram.
2. Review the list of guidance questions
3. Click on the most relevant question
4. Review the list of all tools associated with the selected guidance question
5. Click on the names of the tools that seem appropriate based on your objectives and resource constraints.

Each link will open up a page in a new browser tab. Each page features a summary of the tool, links to PDF downloads of the summary and the full set of tool summaries, and an external link to the website of the tool itself.





FEED THE FUTURE

The U.S. Government's Global Hunger & Food Security Initiative

Acknowledgements

- Alyssa Klein
- Daniel Cothran
- Heather Danton
- Lidan Du
- Theresa Russo
- Aysha Twose
- Avril Armstrong
- Lisa Parrott
- Mette Karlsen



www.spring-nutrition.org

Thank you!

For more info, please contact: info@spring-nutrition.org



www.spring-nutrition.org