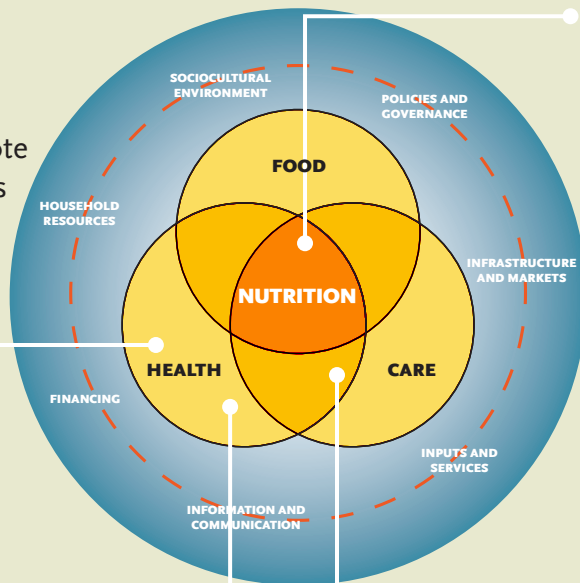


SPRING IS WORKING TO STRENGTHEN THE NUTRITION SYSTEM IN MALI

Following facility-level ENA/EHA trainings, **conducted supportive supervision visits using tablet computers** that provide real time feedback to help promote improved staff practices and monitor the quality of nutritional services received by clients

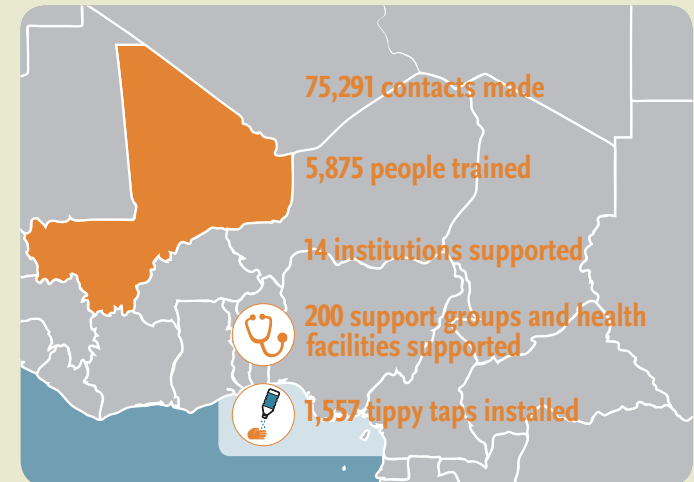


In collaboration with the regional government, **triggered community-led total sanitation in 15 villages and established 1,557 tippy taps** at the household level

Initiated training for **500 leaders in nutrition-sensitive agriculture** through 20 commune-level Farmer Nutrition Schools who in turn **trained an additional 5,000 farmers** to increase access to diverse and quality foods

Completed **cascade trainings on the Essential Nutrition Actions and Essential Hygiene Actions (ENA/EHA)** for 375 facility-based health workers and community actors

REACHING PEOPLE



SPRING is working across 4 cercles, 20 communes, and 100 villages in Mali, reaching community leaders and health workers with nutrition-sensitive agriculture, ENA/EHA, and WASH interventions.

EXERTING INFLUENCE: HIGHLIGHTS

