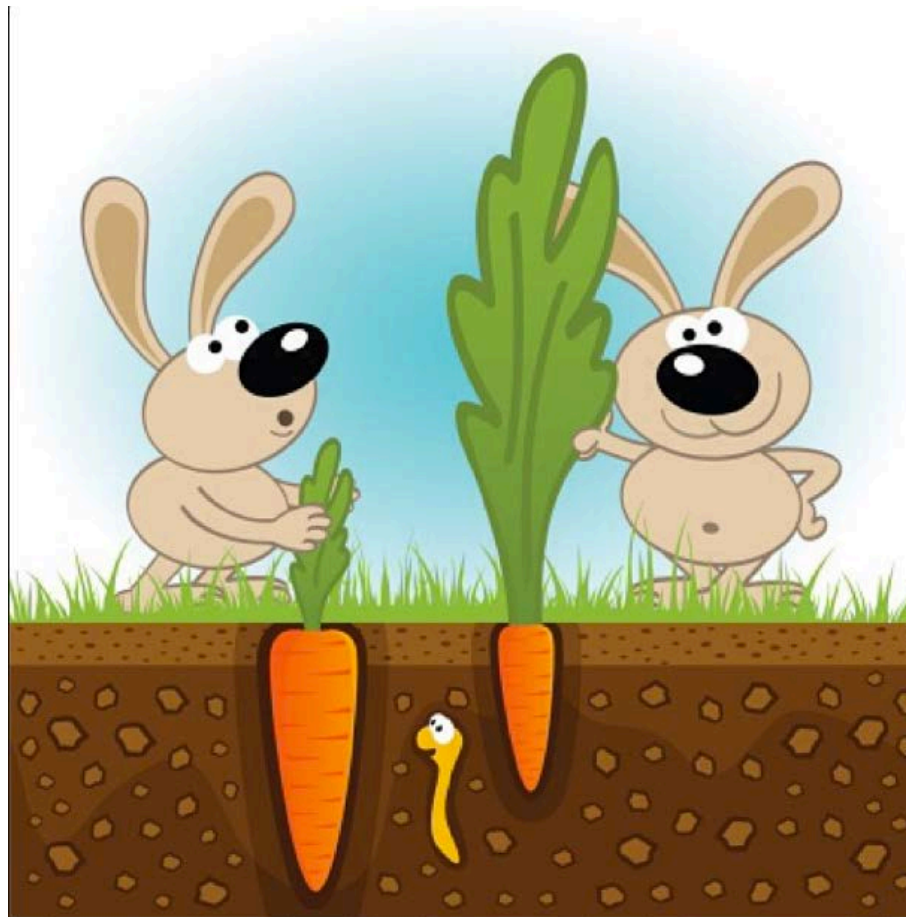


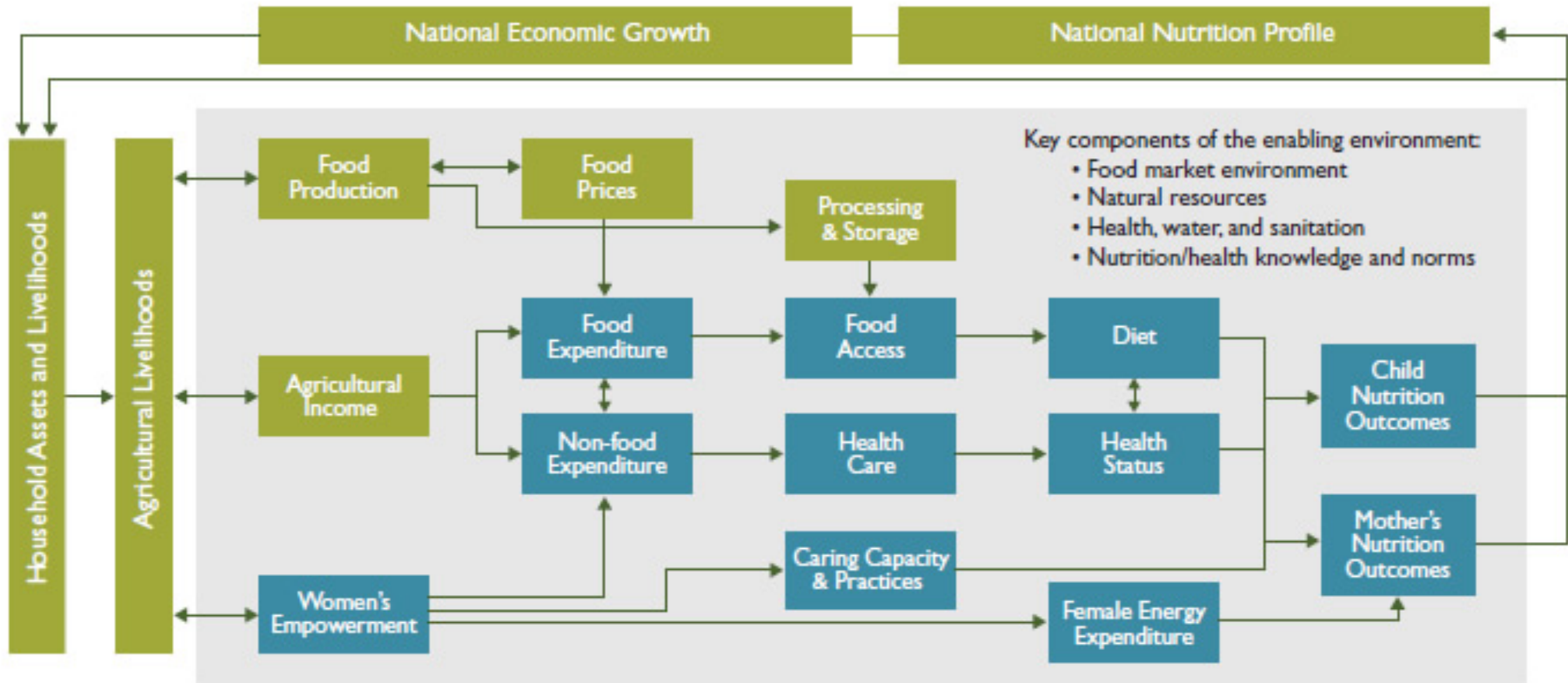
# The Women's Empowerment Pathways

**Kristi Tabaj**

**Gender Senior Specialist, TOPS**

**15 September 2015**





Women's Empowerment Pathway is highlighted in blue

## The Women's Empowerment Pathways

Women's use of income

Caretaking

Women's energy expenditure

# Women's Use of Income

Agriculture—female employment—female socioeconomic power—household expenditure (food/health)—intrahousehold allocation—nutrition outcomes

## Also

“Women's roles in agriculture and intrahousehold decision making and resource allocation may be influenced by agricultural activities and gendered control of assets, which in turn influences intrahousehold allocations of food, health, and care”

# Caretaking

Agriculture—(female) employment—caring capacity/practice—nutrition outcomes

## Also

“Maternal employment in agriculture and child care and feeding: A mother’s ability to care for her child may be influenced by her engagement in agriculture.”

# Women's Energy Expenditure

Agriculture—female employment—energy expenditure—female adult BMI

## Also

“Women in agriculture and maternal nutrition and health status: Maternal health and nutritional status may be compromised by the often arduous and hazardous conditions of agricultural labor, which may in turn influence child nutrition outcomes.”

# Resources

CARE's Measuring and Monitoring Social Behavior Change

<http://www.carepathwaystoempowerment.org/sharing-care-ing-pathways-shares-innovative-tools/>

CORE Group and WI-HER Gender Sensitive Social and Behavior Change Resource

[http://www.coregroup.org/storage/documents/Resources/Tools/Gender\\_Sensitive\\_SBC\\_Tech\\_Resource\\_Guide\\_Final.pdf](http://www.coregroup.org/storage/documents/Resources/Tools/Gender_Sensitive_SBC_Tech_Resource_Guide_Final.pdf)

Hellen Keller International's Nurturing Connections

[http://www.fsnnetwork.org/sites/default/files/TOPS\\_Nurturing%20Connections\\_English\\_FINAL\\_P.pdf](http://www.fsnnetwork.org/sites/default/files/TOPS_Nurturing%20Connections_English_FINAL_P.pdf)

Save the Children's Choices, Voices, and Promises Programming

<http://irh.org/blog/engaging-adolescents-parents-community-change-inequitable-gender-norms-rural-nepal/>

IFAD Household Methodologies Toolkit

<http://www.ifad.org/knotes/household/index.htm>